

**LIFE SKILLS  
FINANCIAL LITERACY  
CAREER EDUCATION  
SOCIAL / EMOTIONAL**

# **R-SQUARED**

**REPLICATED REALITY**



# R-SQUARED

REPLICATED REALITY

AN ONLINE **LIFE SKILLS**  
..... **PLATFORM**

THAT CREATES A COMPLETE  
**ECOSYSTEM**

OF ENGAGING .....

**APPLIED  
LEARNING**

**OPPORTUNITIES**



# CAREER EDUCATION

## YOUNG LEARNERS

For grades K-3, career awareness begins with exploration of community workers, opportunities to learn work behaviors through classroom jobs, or host community career fairs through our Career Center.

## UPPER ELEMENTARY

Grades 4 and 5 have the opportunity to experience the application and hiring process using our online application and interview tools - built at the introductory level for optimal learning opportunities.

Students can also gain valuable experience by working in one of student-run onsite work experiences under the guidance of a faculty member.



**By focusing on the needs of education in areas that aid in student transition from school to college, career, work and independent living, we are able to provide tools in the various important areas of the K-12 education system - and beyond.**

# MIDDLE / HIGH SCHOOL

Middle and High School students can use our tools to explore career path potentials, engage in the application and hiring process and perfect their resume as they prepare to go out into the world.

R-Squared also provides many tools for the employee process once a student is hired including performance reviews, time clocks, online scheduling and more. Our goal is to give students the most realistic work experience possible.



## ON-SITE WORK EXPERIENCES

Our on-site work experiences gives schools the ability to offer student-run services like banking, mail delivery, retail store and a career center which enable students to receive real work experience and training.

A collage of images and text promoting on-site work experiences. The central yellow box lists "Available Experiences" including "BANK BRANCH", "POST OFFICE", "RETAIL STORE", and "CAREER CENTER". The background features a vertical strip on the left with the text "CAREER CENTER" and a cartoon bear logo, and a vertical strip on the right with the text "POST OFFICE" and a cartoon bear logo. The collage also includes photos of a woman in a lab coat, a woman in a hard hat, a woman in a black top, and a man in a white shirt looking at a piece of paper in front of a post office mailbox.



# FINANCIAL LITERACY

With all the new changes and requirements in the way schools are taking on personal financial and financial literacy education, we are here to provide you the innovative and creative solutions to help!

Students of all ages can explore daily financial challenges of independent living from managing a bank account, budgeting bills and incomes, and becoming familiar with our cashless society.



**Online Banking**  
**Payroll Management**  
**Recurring Bills**  
**Budgeting Tools**  
**Goal-Oriented Savings**  
**Smart Spending**  
**PIN-Based Debit**

Through hands-on role play and contextual learning, students are able to manage their own personal finances over the course of time - either a semester, a school year, or their entire K-12 career.

In an effort to truly replicated reality, R-Squared gives you tools like student id integration as debit cards for PIN-Based transactions, automated bill paying, and direct deposit.

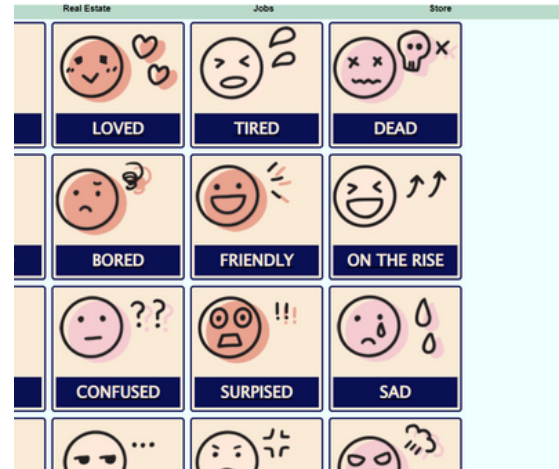
## YOUNG LEARNERS

Even our youngest learners can take advantage of our banking program by managing reward money or classroom job pay. Our YL program focuses on money identification, spending and savings, as well as an introduction to the concept of lending practices.



# EARLY WELLNESS INTERVENTION

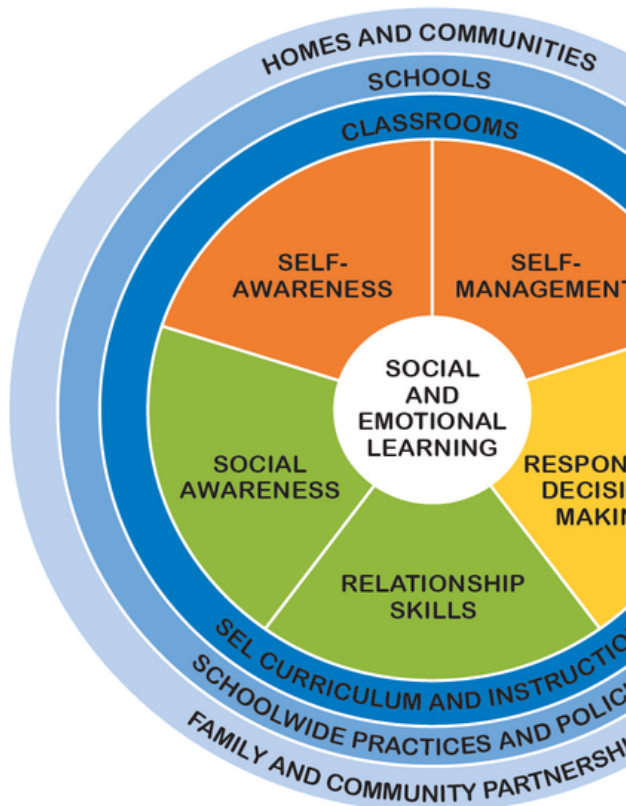
R-Squared's daily vibe check and attendance tracker provides an opportunity for students to practice self-awareness and learn positive mood behaviors and de-escalation techniques. By tracking moods over time, the vibe check also serves as a research-backed early wellness intervention measure.



## CONSISTENT PBIS

With school- or district- wide implementation options, R-Squared reward-based and collaborative support system can provide a consistent positive behavior intervention support system within your school and/or district.

BUILT-IN MINDFUL  
PRACTICE AND DE-  
ESCALATION  
TECHNIQUES



Built around the CASEL Social and Emotional Framework, our tools integrate self- and social-awareness with each module.

Through our integrated hands-on activities, students are faced with responsibility, decision-making and peer interaction.

**SOCIAL**  
**EMOTIONAL**



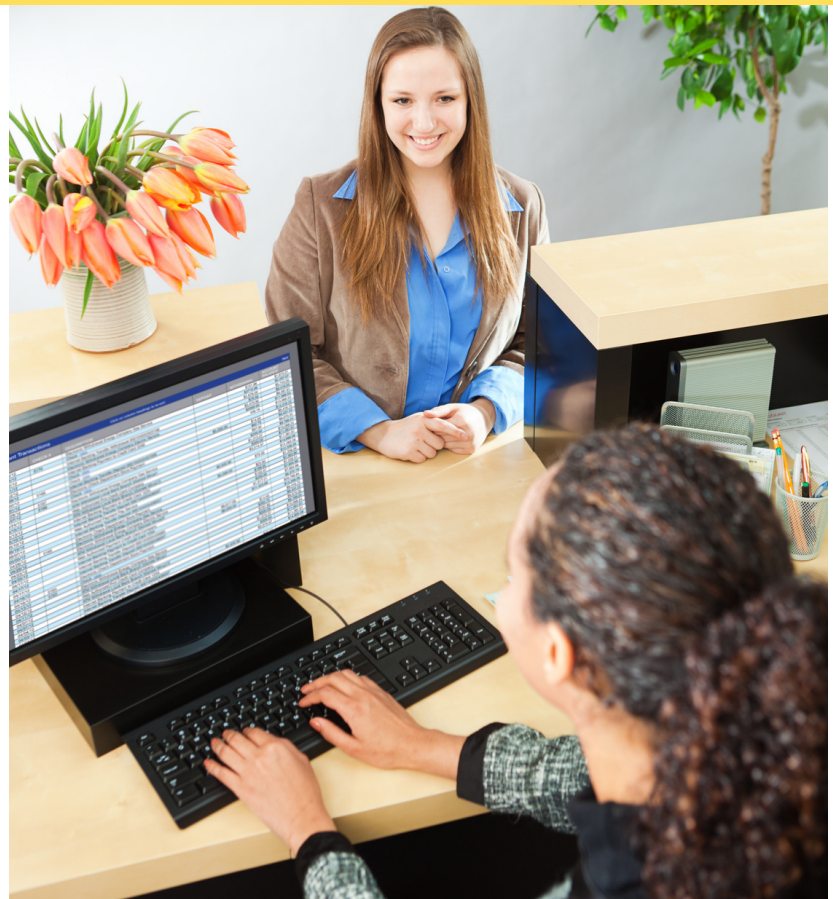


Real Hands-On  
Experience for  
students to  
explore work

Suitable for  
ALL  
Learners

# Work-Based Learning

Computer-based  
and  
on-the-job training  
encourages work  
ethic, teamwork,  
and soft skills



# WHAT'S INCLUDED?

## BANKING MODULE

- Checking Account
- Savings Account
- Unlimited Savings Goals
- Online Banking
- Money Transfers
- Custom Bills
- Auto Pay
- 50/30/20 Budgeting Tools
- Custom Budgeting Tools
- Direct Deposit Allocation
- Student-to-Student Transfer
- truCash Account Option
- Cashless Reward System
- Student-ID Debit Card

## JOBS MODULE

- Online Job Board Posting
- Online Job Application
- Interview Scheduling
- Onboarding Process
- Automated Hourly, Salary, or Production Payroll Models
- Time Clock
- Direct Deposit Cashless Payroll
- Resume Tools
- Performance Review Process
- Peer Networking and Referrals

## REAL ESTATE MODULE

- Online Leasing Boards
- Online Leasing Application Process
- Customized Property Listings
- Teacher Controlled Properties
- Unique Addresses for each property opens opportunity for mail system
- Income qualification limits integrated with Jobs Module
- Automated Invoicing of Rental Payments



## **GAMIFIED REWARD**

- 3-D Multi-Player World Building Platform
- In-game Purchases Enable WANTS-VS-NEEDS Spending
- Personal World Building Encourages Creativity and Imagination
- Multi-Player Platform Encourages social interaction between classmates
- Limited to school- and classmates only

## **CLASSROOM MODULE**

- Assignment Management
- Grade Book
- Lesson Plan Builder
- Online Student Planner
- Integrated Calendar
- Year-to-Year Duplication
- Resource Storage
- Daily Vibe Check
- Attendance Tracker
- Google Classroom Integration
- Reward Integration for assignment submission

## **MESSAGE HUB**

- Email Notification Management for Teachers, Students, and Administrators
- Personal Message Inbox
- Internal Messaging and Notifications ONLY
- School or Classroom - Wide Address book for peer messaging
- Trackable and Accessible Messaging to Aid in Anti-Bullying Efforts and Communication Accountability

# PROGRAM ADD - ONS

## ON-SITE WORK EXP

- Each Work Site Experience Includes the Tools Necessary for the Student Jobs
- Computer-Based Training for all Student Employees
- Employee Online Scheduling
- Custom Banner for Work Site Branding
- Student ID Integration for Time Clock and Consumer Services

## SETUP & TRAINING

- All School-Wide Implementations Include Onsite Setup and Training
- Virtual Training Available
- On-Demand Training and Resource Library Available
- Support Available via Phone, Email, and Video
- Setup and School Year Initialization Tools Makes the Process Easy!

## STANDARDS ALIGNED CURRICULUM

- Supplemental Curriculum Available in 2023
- Financial Literacy and Personal Finance
- Career & Life Skills
- K-5: Activity-Based Lesson Plans (1-Hour Per Week)
- MS/HS: Semester-Based Lesson Plans (5-Hours Per Week, 18 Weeks)

# PROGRAM SPECS .....

## ALL BASE SUBSCRIPTIONS INCLUDE

**Teacher Licenses | Student Licenses | Admin Licenses\* | Student Portal | Teacher Portal | Admin Portal\* | Banking Mod | Jobs Mod | Real Estate Mod | Online Shopping Mod | Classroom Mod | Communications Hub | SEL / Wellness**

\* Available only in School- or District-wide subscriptions. May be available with classroom subscription as an add-on

## TECHNICAL SPECIFICATIONS

- Works with all modern browsers
- Requires Internet Connectivity
- Desktop, Laptop, Tablet, and Phone Compatible
- PC / Mac Compatible

## OVERALL FEATURES

**K-12+ LEVELED EXPERIENCES INCLUDED**

**INDIVIDUAL, CLASS, AND SCHOOL LEVEL REPORTING**

**EASILY CUSTOMIZABLE AT SCHOOL AND CLASS LEVEL**

**STANDARDS ALIGNED - CTE, SEL AND PERSONAL FINANCE**

**WEB-BASED - NO DOWNLOADS REQUIRED**

# ..... Designed for ALL Learners

## INDIVIDUALIZED LEARNING

With each module offered in 4 different developmental / academic levels, you can customize your students' experience by school, by class, or by student! We strive to promote the most inclusive and accessible platform, providing the best experience for ALL learners.

## TECHNICAL REQUIREMENTS

- Windows 10 / macOS 10.12 (Sierra) or higher
- 10-20 Mbps or higher internet speed
- 1920 x 1080, 16:9 Aspect Ratio Display
- USB ports for hands-on components

## LEVELED EXPERIENCES

### **YL (Young Learners)**

**Dev / Acad Level: K-3 / ages 5-9**

Focused on classroom management, basic money concepts, community / career awareness, pro-social and emotional regulating behaviors.

### **MS (Middle School)**

**Dev / Acad Level: 6-8 / ages 11-14**

Focused on hands-on worksite experiences, job seeking and employment, networking, budgeting, financial decision-making, critical thinking, pro-social and emotional regulating behaviors.

### **UE (Upper Elementary)**

**Dev / Acad Level: 4-5 / ages 9-11**

Focused on basic job seeking and employment, worksite introduction, basic budgeting and money management, pro-social and emotional regulating behaviors.

### **HS+ (High School Plus)**

**Dev / Acad Level: 9-12+ / ages 14-adult**

Focused on hands-on worksite experiences, advanced job seeking and employment, networking, advanced budgeting, financial decision-making, critical thinking, pro-social and emotional regulating behaviors.





Scan here to build  
your program and  
request your  
personalized quote

# Build Your Custom Program Classroom Subscription

A classroom subscription includes one primary teacher and 30 student/co-teacher licenses. This subscription is best for schools that will be using the program in a single classroom with a subset of students. With the Classroom Plus subscription, you can add up to 7 classes and an additional 30 student / co-teacher licenses PER CLASS under the same primary teacher.

	Initial	Annually
<b>Classroom Base Subscription</b>	\$995.00	\$995.00
<b>Additional Class (Classroom Plus)</b>	\$ 79.00	\$ 79.00
<b>Teacher License (1)</b>	Included	Included
<b>Student / Co-Teacher License (30 per class)</b>	Included	Included

Add - Ons	Initial	Annually
<b>Hands-On Bank Experience</b>	\$3,900.00	\$175.00
<b>Hands-On Store Experience</b>	\$3,900.00	\$175.00
<b>Hands-On Post Office Experience</b>	\$3,900.00	\$175.00
<b>Hands-On Career Center Experience</b>	\$3,900.00	\$175.00
<b>Hands-On Bundle (All 4 Experiences)</b>	\$11,700.00	\$525.00
Bundle all four, receive 25% discount		
<b>Personal Finance Curriculum*</b>	\$1,795.00	\$295.00
<b>Career Tech Education Curriculum*</b>	\$1,795.00	\$295.00
<b>Onsite Setup &amp; Training (3-Days)</b>	\$3,995.00	
<b>Onsite Training (1-Day)</b>	\$1,995.00	
<b>Virtual Training (3-Hour)</b>	\$295.00 per participant	

\* Will be available in Spring 2023

# School- and District-Wide Subscriptions

School- and District-Wide subscriptions can be customized to any size to fit your specific need. Contact us today for your personalized quote!

	Initial	Annually
<b>School-wide Base Subscription</b>	\$7,500.00	\$7,500.00
<b>Admin License (2)</b>	Included	Included
<b>Teacher License (10)</b>	Included	Included
<b>Student / Co-Teacher License (200)</b>	Included	Included
<b>Classrooms (Unlimited)</b>	Included	Included

## Customize Your Numbers

When calculating your license numbers, include ONLY what you need beyond the base package.

For instance, if you have 600 students and 25 teachers, you would calculate for an ADDITIONAL 400 students and 15 teachers.

### Additional Student Licenses

1-250 Additional Students

251-500 Additional Students

501-999 Additional Students

1000+ Additional Students

### Initial & Annual

\$ 1.79 per student

\$ 1.43 per student

\$ 1.14 per student

\$ 0.91 per student

### Additional Admin/Teacher Licenses

1-29 Additional Licenses

30-99 Additional Licenses

100+ Additional Licenses

### Initial & Annual

\$ 13.75 per license

\$ 11.00 per license

\$ 8.80 per license

## License Types

### ADMIN LICENSES

#### Base: 2 per school

Admins manage much of the setup and school-wide reporting.

### TEACHER LICENSES

#### Base: 10 per school

Teachers manage their students and classrooms as well as oversee the employment process and work experiences.

### STUDENT LICENSES

#### Base: 200 per school

Students are all learners that utilize the program and experiences set up by teachers and administrators. Student licenses can also be converted to co-teacher accounts for paraprofessionals and assistants,



# SNOW CLOUD

P R O D U C T I O N S

© 2022